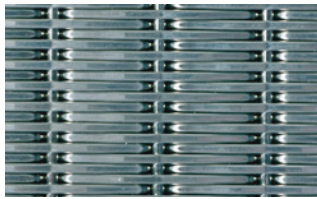
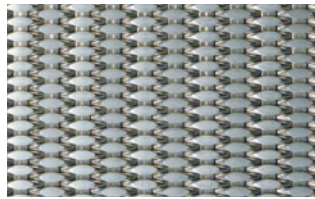


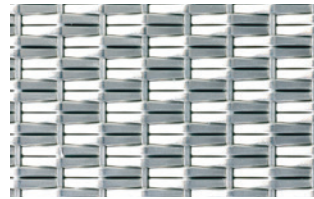
GAGEWOVEN® Standard Designs



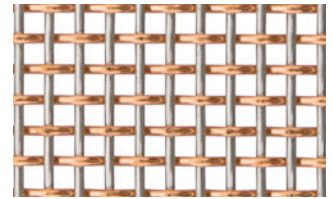
GW900 Escalator (SS)



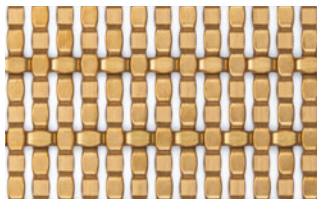
GW902 Snakeskin (SS)



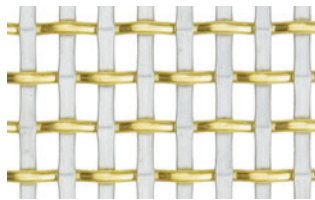
GW903 Baroda (SS)



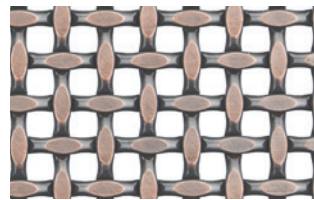
GW906 Round Symmetry (C/SS)



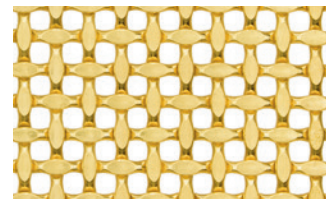
GW908 Jewel Path (CB)



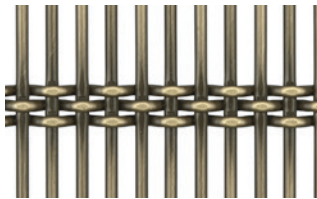
GW909 St. Paul (B/SS)



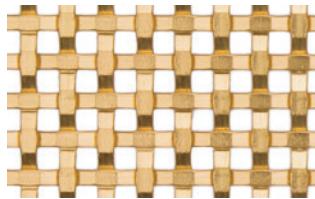
GW910 Ice Dancer (CA)



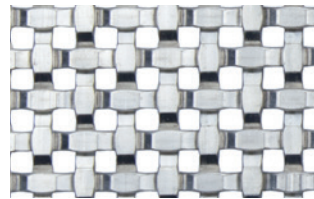
GW910A Ice Dancer II (B)



GW911 Venetian (BA)



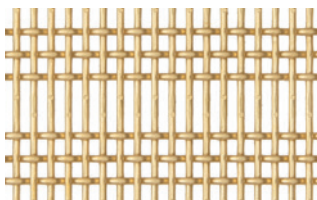
GW912 Blue Collar (CB)



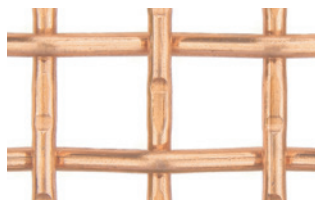
GW912A Blue Collar II (SS)



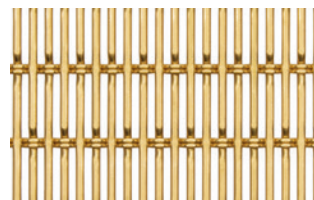
GW913 Highrise (SS)



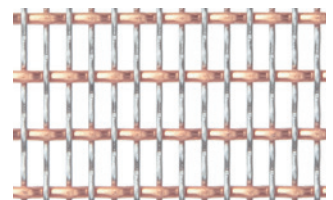
GW914 Corsican (B)



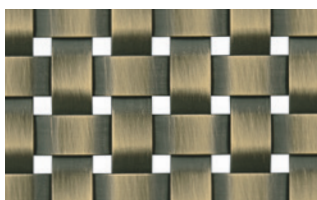
GW915 Intersection (C)



GW916 Linear Cross (CB)



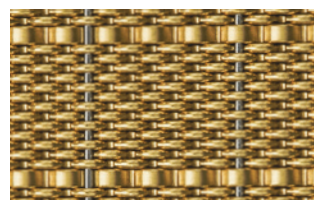
GW918 Madison (C/SS)



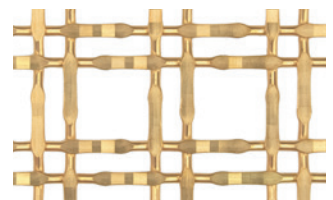
GW921 Chess (BA)



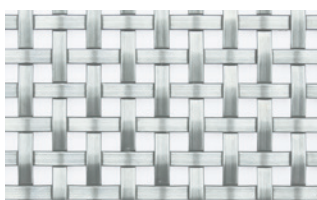
GW925 Infinity II (CA)



GW927 Akiko II (B/SS)



GW928 Rivoli (CB)



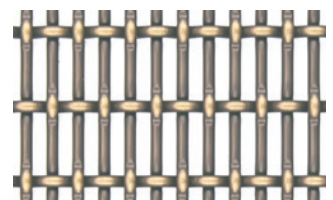
GW929 Gridlock (SS)



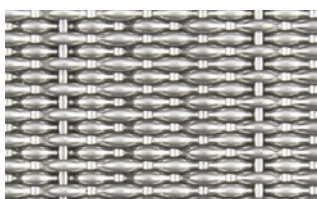
GW930 Basketweave (BA)



GW931 Waverly (B)



GW932 Charmant (CA)



GW933 Linen (SS)



Design #	Name	Mesh Category	% Open area	Weight lbs per SF	Thickness	Max "W" Dimension	Max "H" Dimension	"W" DIM ALLOY	"H" DIM ALLOY	Mixed Metals	Antique Finish	Powder Coat
GW900	Escalator	Opaque	0.00%	2.200	0.206"	60"	120"	SS	SS	No		
GW902	Snakeskin	Opaque	0.00%	3.250	0.123"	60"	120"	SS	SS	No		
GW903	Baroda	Opaque	0.00%	1.850	0.105"	60"	120"	SS	SS	No		
GW906	Round Symmetry	Fine	44.00%	1.400	0.126"	72"	168"	SS, CB, C, B	SS, CB, C, B	Yes**	A	PC
GW908	Jewel Path	Medium	27.30%	2.490	0.130"	60"	168"	SS, CB, B	SS, CB, B	No	A	PC
GW909	St. Paul	Fine	41.10%	1.630	0.140"	72"	120"	SS, CB, C, B	SS	Yes*	A	PC
GW910	Ice Dancer	Medium	36.90%	2.940	0.156"	60"	168"	SS	SS	No	A	PC
GW910A	Ice Dancer II	Medium	31.00%	2.050	0.100"	72"	168"	SS, CB, B	SS, CB, B	No	A	PC
GW911	Venetian	Medium	42.30%	2.300	0.290"	96"	168"	SS, CB, B	SS	Yes*	A	PC
GW912	Blue Collar	Fine	25.30%	1.780	0.080"	60"	168"	CB, C, B	CB, C, B	No		
GW912A	Blue Collar II	Fine	21.60%	2.150	0.105"	60"	120"	SS	SS	No	A	PC
GW913	Highrise	Medium	31.30%	1.570	0.143"	72"	168"	SS, CB, B	SS, CB, B	No	A	PC
GW914	Corsican	Fine	43.50%	1.180	0.108"	72"	168"	SS, CB, B	SS, CB, B	Yes**	A	PC
GW915	Intersection	Medium	61.30%	1.510	0.210"	96"	168"	SS, CB, C, B	SS, CB, C, B	Yes**	A	PC
GW916	Linear Cross	Fine	39.00%	1.674	0.130"	72"	168"	SS, CB, B	SS, CB, B	No	A	PC
GW918	Madison	Fine	53.90%	0.840	0.098"	72"	168"	SS, CB, C, B	SS	Yes*		
GW921	Chess	Medium	9.70%	2.300	0.080"	72"	168"	SS, B	SS, B	No	A	PC
GW925	Infinity II	Medium	41.40%	1.700	0.160"	60"	120"	SS	SS	No	A	PC
GW927	Akiko II	Opaque	0.00%	2.270	0.175"	60"	120"	SS, CB, B	SS	Yes*		
GW928	Rivoli	Fine	61.00%	1.020	0.160"	72"	168"	SS, CB, B	SS, CB, B	No	A	PC
GW929	Gridlock	Fine	25.00%	1.220	0.063"	72"	168"	SS, CB, B	SS, CB, B	No	A	PC
GW930	Basketweave	Medium	44.6%	1.540	0.142"	72"	168"	SS, CB, B	SS, CB, B	No	A	PC
GW931	Waverly	Fine	64.5%	0.840	0.126"	72"	168"	SS, CB, B	SS, CB, B	No	A	PC
GW932	Charmant	Fine	44.00%	1.360	0.126"	72"	168"	SS, CB, B	SS, CB, B	Yes**	A	PC
GW933	Linen	Opaque	0.00%	2.21	0.150"	60"	120"	SS, CB, B	SS	Yes*		

* If mixed metal, one alloy must be Stainless Steel (SS)

** If mixed metal using a CB, C or B alloy, "H" must be Stainless Steel

SS = Stainless Steel

CB = Commercial Bronze

B = Brass

C = Copper

A = Antique Brass (BA) or Antique Copper (CA) finishes on Mild Steel. Size limitations apply.

PC = Satin Black, or Oil Rubbed Bronze finishes on either SS or mild steel. Size limitations apply.